

- Suitable for high-speed control
- Overexciting voltage (DC 100V) is impressed during engaging to increase response of electromagnetic clutch and brake. Torque rise time shortened and high-accuracy operation assured.
- Compact design without power transformer.
- All circuits are contactless.

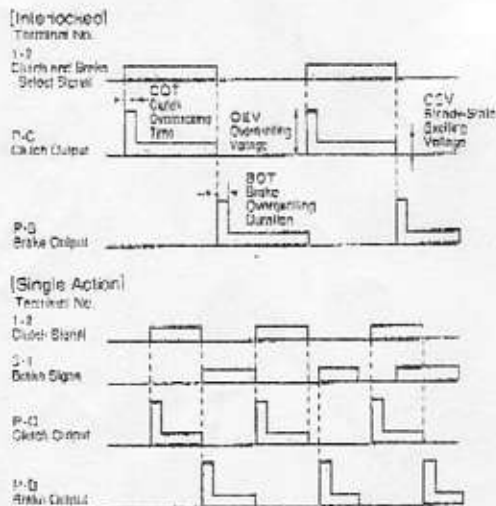
Specification

Control No.	06	10	12	16
Input Voltage	AC200V/220V ±10% 50/60Hz			
Output Voltage	Overexciting voltage DC 100V			
	Steady-state exciting voltage DC 24V			
Overexciting Time	Adjusted by individual size upon shipment from plant			
*Applicable Clutch and Brake Size	06・08	10	1A	16
Control Panel Power Consumption	15W (Under no load)			
Input Signal	DC5~24V3mA Smoothed power supply			
Operating Ambient Temperature	0~50℃			
Protective Functions	Overcurrent trip			
	During trip operation: Both clutch and brake stopped. (Can remain in stopped condition) (Reset when power is turned off)			
Fuse	FU1: 20A (Instantaneously-off fuse)			

*Applicable clutch and brake sizes are sizes of excited clutches and brakes (rated voltage DC 24V) manufactured by Miki Pulley, excluding the 180 series and multiple tooth clutches

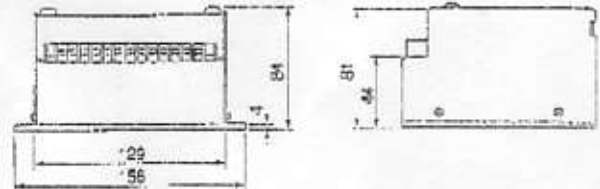
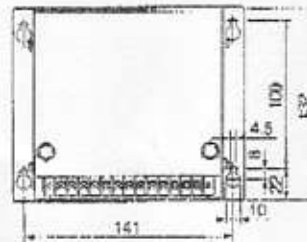
■ Ordering Information: Specify **BEJ-10-□**
Model

Timing Chart



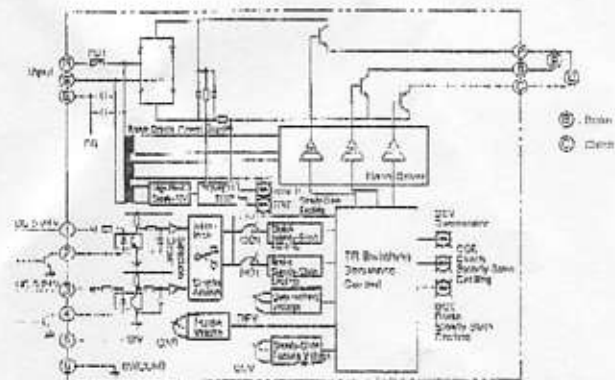
*Interlock and single action operations can be selected by an internal switch (SW1). Switch is set to interlocked when the equipment is shipped from the plant.

Design Types



●CAD File No.: BE1

Construction



Wire Connection

